

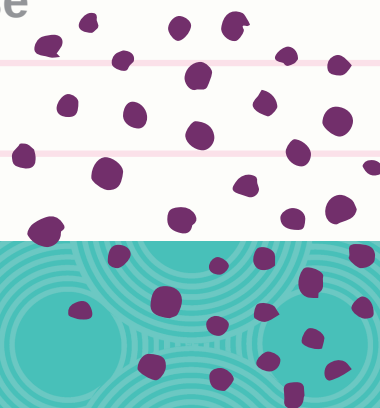


# Teacher Training Twilight Overview

[www.equation.org.uk](http://www.equation.org.uk)

equal relationships, free from abuse

Registered Charity No: 1140240



# ABOUT EQUATION



**‘Our goal is for everyone to have equal, healthy relationships, in a society free from domestic abuse, sexual violence and gender inequality’.**

***‘Equation is a specialist charity that works with the whole community to reduce the impact of domestic abuse, sexual violence and gender inequality.’***



**Positivity, Passion, Rigor, Compassion, Collaboration**

# TWILIGHTS

- Twilights are a suite of 60-90 minute training sessions for professionals, particularly those in an education setting, or working elsewhere with children and young people.
- The sessions explore key issues surrounding abuse and relationships, enabling professionals to more keenly identify when children and young people they work with might be at risk, equipping them with the insight and knowledge to take preventative measures and aid survivors in gaining the support they require.
- The sessions are designed for groups of 5 plus for convenient and accessible delivery in your own work setting.

## Our current offer is:

- Domestic Abuse Awareness
- Domestic Abuse in Teenage Intimate Relationships
- Online Safety
- Youth Produced Sexual Imagery (Sexting)
- Sexual Harassment in a School Setting
- Consent
- Female Genital Mutilation (FGM)
- Forced Marriage and Honour Based Abuse
- Child Sexual Exploitation: A Basic Awareness

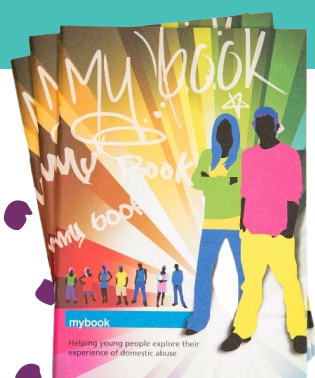
To find out more details about each session. Visit our websire:  
[www.equation.org.uk/teacher\\_training\\_](http://www.equation.org.uk/teacher_training_)



# RESOURCES

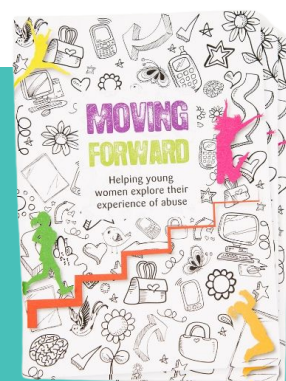
Support resources are available to be ordered on [equation.org.uk](http://equation.org.uk) website or by contacting us through email provided on the back of the brochure.

**BOOKLET FOR ME** is a positive and creative activity booklet for children aged 7-11 takes them on a learning journey towards further understanding their experience of abuse and moving forwards. The child's journey helps them to understand what abuse is, to reflect on what is happening in their own relationships and to recognise how they are impacted. A Booklet for Me can help children to feel empowered and to move forwards with resilience and strength.



**MY BOOK** is a booklet designed to help and support children aged 11 upwards who have experienced domestic abuse. It takes the person on a journey through positive memories and understanding what has happened to them. My book is a personal resource for the child to work through and document emotions, feelings and changes in their lives all while building resilience and growing healthy coping mechanisms

**MOVING FORWARD** is designed to help young women 13+ explore their experience of abuse. The booklet takes them through understanding abuse in all its complex forms, recognizing what is happening to them and what to do. Moving Forward book helps them to look at the future by recognizing their rights, building resilience, celebrating friendships and reflecting on how far they have come.



**SELF ESTEEM** is a positive and inspiring activity booklet for young women that helps them build resilience, recognise their strengths and feel empowered to pursue a positive future.

**CHOOSE YOUR LIFE** is a guide for young men to better understand who they are and who they could be. This high-quality and creative activity booklet for young men helps them identify the choices they have, including in relationships, and helps empower them to make positive choices.

**SEX, CONSENT AND CONSEQUENCES.** This is an information booklet tailored for young people that delivers the facts about sex when it comes to individual rights and responsibilities, and the emotional and legal necessity of consent for sexual intimacy. It empowers young people to make informed, safe and positive choices through delivering clear, non-judgemental sex and relationships information. Suitable as a standalone guide for all young people of secondary school age (11+).







## WHERE TO FIND MORE INFORMATION



**[www.equation.org.uk](http://www.equation.org.uk)**



**Tel: 01159623237**



**[info@equation.org.uk](mailto:info@equation.org.uk)**



**[@equationorg](https://www.instagram.com/equationorg)**